



STEMFACIAL[®] CYTOPEN[®]

The Industry's
most effective
Stem Cell
Cytokine Growth
Factor Skin
Rejuvenation
System



CYTOPEN®



- Highest quality for medical professionals
- First dual battery & electric operation
- High torque German motor
- Aluminum body – no plastic
- Fully sealed
- Compact ergonomic design
- Quiet operation
- Adjustable needle depth 0 to 2.5mm
- 12-needle tip
- 33-gauge needles
- Stainless steel (no nickel)
- Ported cartridges ensure consistency and accurate depth
- Scalloped edges prevent wiper effect
- No leak, single use cartridges securely lock in place

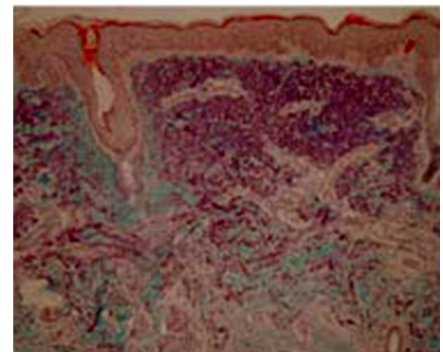
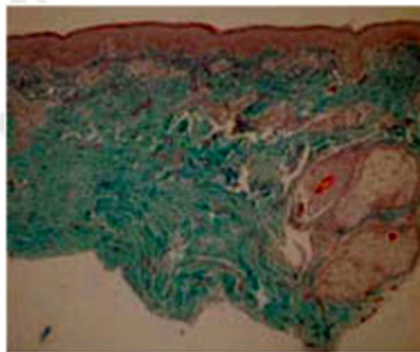
**UNSURPASSED
EFFICACY &
VERSATILITY**

Now offering for **CytoPen®**:

***Microderm Cartridges for Microdermabrasion
2 modalities in one instrument!***

Reduces the appearance of:

- Wrinkles
- Skin laxity
- Hyperpigmentation
- Large pores
- Skin roughness
- Acne and other scars
- Stretch marks



Biopsies show new collagen fibers (stained purple)
increased 1000% after a CytoPen® treatment.

STEMFACIAL®

- Advanced molecular science of stem cell growth factors & peptides
- Developed by physician scientists
- Use in conjunction with micro needling and post laser treatment
- Mesenchymal stem cells extracted from human bone marrow
- From stem cells, we extract:
 - Cytokines
 - Peptide proteins
 - Growth factors
 - No DNA/RNA
- 34 growth factors

REVOLUTIONARY BREAKTHROUGH IN THE SCIENCE OF CYTOKINE GROWTH FACTORS

The StemFacial® is a 3-treatment, 9-week program of Collagen Induction Therapy (CIT)



Matrix Solution

The StemFacial® Matrix solution is used during the micro needling treatment.

The Matrix solution contains Mesenchymal stem cell cytokines and growth factors, hyaluronic acid and seven peptides in a liquid format. The biologics are anti-inflammatory and not allergenic.

Continuing Care Duo

The patient continues care at home between treatments using the Duo in the morning and evening.

Step 1 contains similar mesenchymal stem cell cytokines, growth factors and peptide biologics as the Matrix solution, but in a hydrating gel.

Step 2 contains botanical actives, including cytokines and growth factors, peptides, Retinol, antioxidants, vitamins, essential oils and more.



STEMFACIAL[®]

CYTOPEN[®]



After 3 CytoPen[®] /
StemFacial[®] treatments



6 CytoPen[®] / StemFacial[®] treatments



3 CytoPen[®] / StemFacial[®]
treatments



1 CytoPen[®] / StemFacial[®] treatment

EMAGE
Innovative Aesthetic Solutions

Emage Medical LLC
15720 Brixham Hill Avenue
Suite 300
Charlotte, NC 28277
Main: (704) 412-3152
Fax: (704) 707-3522
www.StemFacial.com
www.EmageMedical.com
info@EmageMedical.com

